

2023

Traditional Sinks & Tapware



WHITEBIRK SINK COMPANY

• ENGLAND •





WHITEBIRK SINK COMPANY
• ENGLAND •

OFFICINA
NICOLAZZI
DAL 1960

Traditional Butlers Sinks & Tapware



WHITEBIRK SINK COMPANY
• ENGLAND •

Introducing Whitebirk Sink Company
Page 4 - 7



Whitebirk Mellor Single Bowl Fireclay Sink
Page 8



Whitebirk Barley Single Bowl Fluted Fireclay Sink
Page 9



Whitebirk Ribbleton Double Bowl Fireclay Sink
Page 10



Whitebirk Hebden Double Bowl Fluted Fireclay Sink
Page 11

OFFICINA
NICOLAZZI
DAL 1960

Introducing Nicolazzi Tapware
Page 12



Nicolazzi Tapware
Page 13 - 15



WHITEBIRK SINK COMPANY

• ENGLAND •

The Whitebirk Story

It was right here in Whitebirk, Lancashire, that the very first traditional fireclay sinks were made, all the way back in the late 1800s. Centuries later, here at the Whitebirk Sink Company we're proud to be the only British-owned company continuing this fine Lancashire tradition.



Whitebirk Craftsmen

Whitebirk craftsmen hold a particularly deep rooted passion for their craft. For many of them, it's a family tradition. Motivated by a tireless passion for their craft, these gifted men and women use their rare talents to keep these traditional methods alive, making each and every fireclay sink a marvel of authentic, specialist manufacturing.

Today, The Whitebirk Sink Company have the enviable distinction of being the only British-owned company to be making handmade fireclay sinks. They're determined to stay worthy of this legacy by handcrafting high quality products that embody flawless aesthetics, solid durability and endless practicality, ensuring they provide our customers with a lifetime of service.



WHITEBIRK SINK COMPANY

• ENGLAND •





WHITEBIRK SINK COMPANY

• ENGLAND •

The handmade process

Every handmade sink is a masterpiece of traditional manufacturing, created by our very own skilled artisans.



Modelling & Moulding

Each different design of the sink is hand modelled in plaster, formed slightly oversize to allow for the natural clay shrinkage that occurs through the production process. From here we make the reverse plaster mould, which will be dried for up to two weeks in dedicated temperature-controlled rooms. This ensures the optimum production performance and dimensional consistency.



Clay Casting

We use virgin local clays, giving us an industry-leading level of control over dimensional accuracy and consistency. All materials are tested to (and exceed) British, European and North American standards. Our clay is cast into the preconditioned moulds, tightly packed to a controlled thickness and left to start the drying process. This method has been used for centuries, and is tried and tested to offer the best performance specifications and strength.





WHITEBIRK SINK COMPANY

• ENGLAND •

The handmade process

Every handmade sink is a masterpiece of traditional manufacturing, created by our very own skilled artisans.



Hand Finishing

After the sink has been turned out of the mould, we meticulously hand finish the surfaces with a variety of wooden and metal tools, along with leathers, all to give the required finish.



Drying

The sinks are allowed to dry naturally at room temperature for a few days. Then, they're moved into our automated, humidity-controlled drying rooms, to fully remove any residual moisture.



Glaze Application

The glazing is done in two stages. First, the englobe (a type of undercoat) is applied, then they are given the final coat of glaze. In the case of our mottled finish, complex glazes are required to achieve this beautiful effect. This process takes a three coat application. Now, they're ready for the kiln.

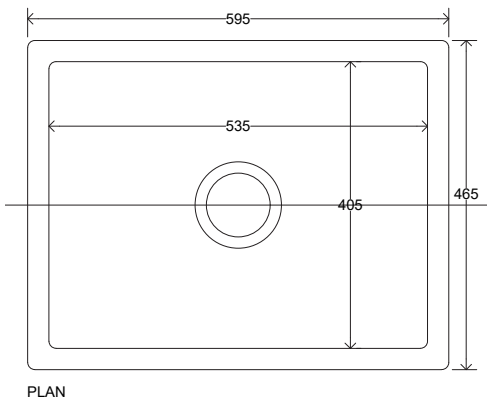


Firing

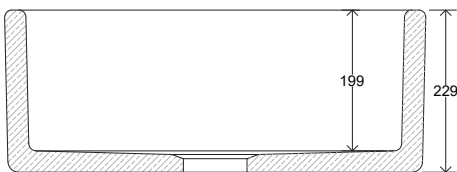
The sinks are set on the kiln for a firing process that will take them over 36 hours, reaching temperatures of more than 1180 degrees Celsius. We obtain the beautiful finish by firing at varying temperatures during this time, before the sinks are allowed to cool naturally in the kiln.



WHITEBIRK SINK COMPANY
• ENGLAND •



PLAN



SECTION

Whitebirk Mellor Single Bowl Fireclay Sink

- Handmade by Master Craftsmen in England
- Lifetime warranty
- Large single bowl sink with apron front
- Weight: 65kg
- Luxurious, durable, anti-bacterial glaze finish
- 595 x 460 x 230mm - 90 mm waste outlet
- Finish: White (WH)



Part No.	Finish	Sold Per
MELLOR.600	WH	ea

Please note: Sink dimensions are subject to + or - 2% tolerance due to the nature of being handmade



OFFICINA
NICOLAZZI
DAL 1960

Pair with...
Italian-Made Tapware
Page 12 - 15



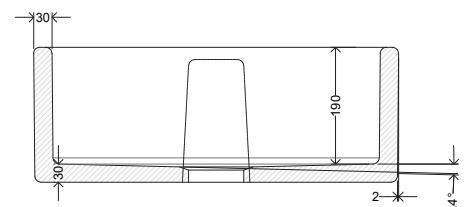
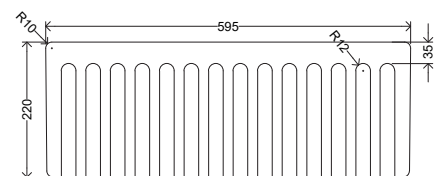
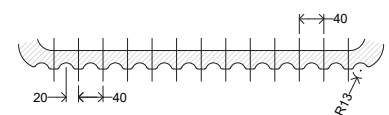
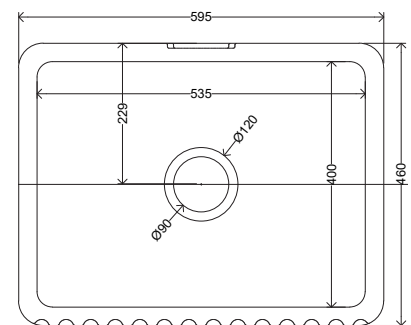
WHITEBIRK SINK COMPANY

• ENGLAND •



Whitebirk Barley Single Bowl Fluted Fireclay Sink

- Handmade by Master Craftsmen in England
- Lifetime warranty
- Large single bowl sink with apron front
- Weight: 65kg
- Luxurious, durable, anti-bacterial glaze finish
- 595 x 460 x 230mm - 90 mm waste outlet
- Finish: White (WH)



Part No.	Finish	Sold Per
BARLEY.600	WH	ea

Please note: Sink dimensions are subject to + or - 2% tolerance due to the nature of being handmade

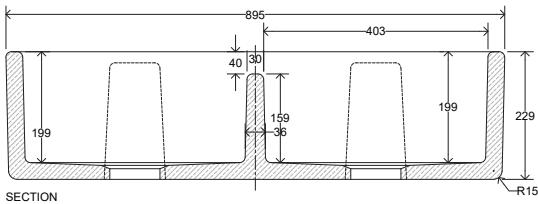
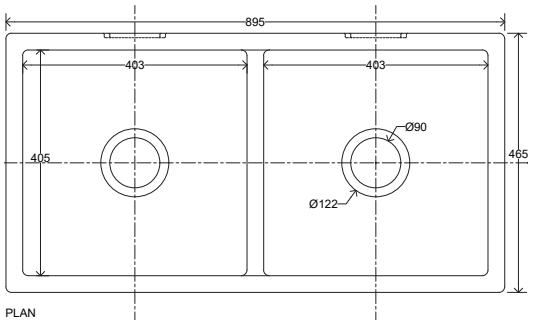
OFFICINA
NICOLAZZI
DAL 1960

Pair with...
Italian-Made Tapware
Page 12 - 15





WHITEBIRK SINK COMPANY
• ENGLAND •



Whitebirk Ribbleton Double Bowl Fireclay Sink

- Handmade by Master Craftsmen in England
- Lifetime warranty
- Generous sized double bowl sink with apron front
- 895 x 465 x 230mm with 2 x 90mm waste outlet
- Weight: 75kg
- Luxurious, durable, anti-bacterial glaze finish
- Finish: White (WH)



Part No.	Finish	Sold Per
RIBBLETON.900	WH	ea

Please note: Sink dimensions are subject to + or - 2% tolerance due to the nature of being handmade



OFFICINA
NICOLAZZI
DAL 1960

Pair with...
Italian-Made Tapware
Page 12 - 15



WHITEBIRK SINK COMPANY

• ENGLAND •



Whitebirk Hebden Double Bowl Fluted Fireclay Sink

- Handmade by Master Craftsmen in England
- Lifetime warranty
- Generous sized double bowl sink with fluted pillar apron front
- 895 x 465 x 230mm with 2 x 90mm waste outlet
- Weight: 75kg
- Luxurious, durable, anti-bacterial glaze finish
- Finish: White (WH)



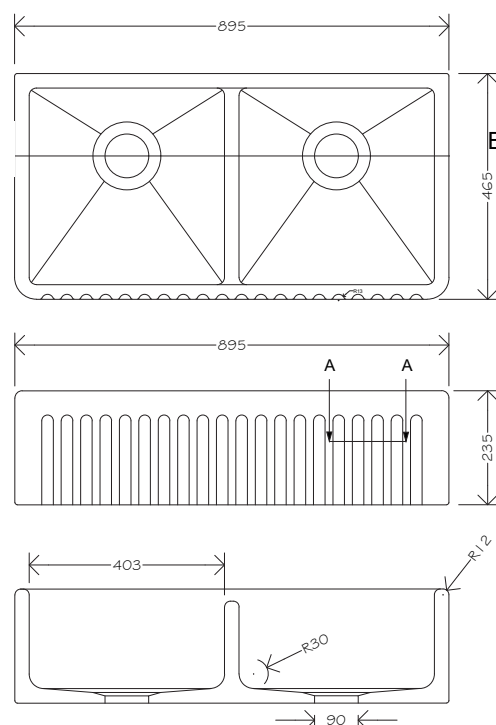
Part No.	Finish	Sold Per
HEBDEN.900	WH	ea

Please note: Sink dimensions are subject to + or - 2% tolerance due to the nature of being handmade

OFFICINA
NICOLAZZI
DAL 1960

Pair with...
Italian-Made Tapware

Page 12 - 15



OFFICINA NICOLAZZI DAL 1960

The Nicolazzi Story

Beautiful, Classic, Italian Made Tapware.

100% made in house from pure brass for over 60 years, Nicolazzi Tapware is made to last.

This beautiful range of traditional tapware perfectly compliments the Whitebirk Fireclay Sinks.

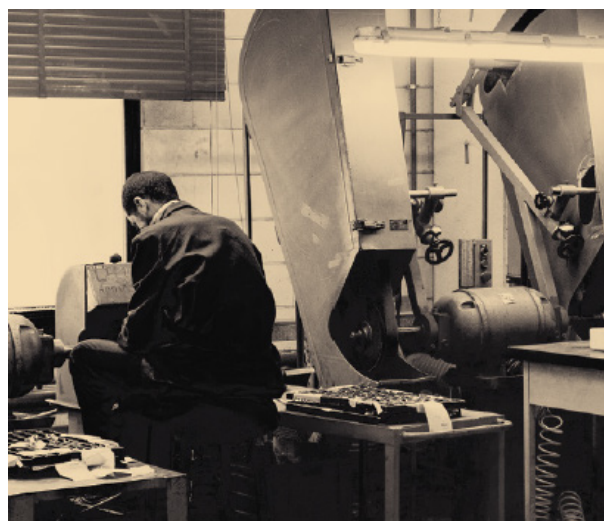


Made in Alzo, Italy

Unlike most other tap manufacturers, all components for Nicolazzi Taps are designed, manufactured and assembled in Italy. Unfortunately, the market is flooded with 'Italian Made' Taps, which are components imported into Italy to be assembled. With Nicolazzi taps you can be assured of lifetime use as well as beautiful design.

Handmade to last a lifetime

Brass is forged in Nicolazzi's Italian factory, components are assembled by hand and finished with care one by one. Before being checked and then double checked and carefully packaged.



OFFICINA
NICOLAZZI
DAL 1960

+


WHITEBIRK SINK COMPANY
• ENGLAND •

=

A Beautiful
Kitchen

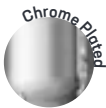
OFFICINA
NICOLAZZI
DAL 1960

Nicolazzi Traditional Single Lever Kitchen Mixer - Chrome Plated

- Handmade & assembled in Italy
- Lead-Safe solid Brass construction
- WELS 4 Star, 7.5L/min
- Swivel spout
- Finish: Chrome Plated (CP)



Part No.	Finish	Sold Per
CBT569	CP	ea



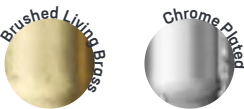
OFFICINA
NICOLAZZI
DAL 1960

Nicolazzi
Traditional Goose Neck Bridge Kitchen Mixer

- Handmade & assembled in Italy
- Two-Hole Bridge Mixer with Goose Neck & Ceramic Levers
- Lead-Safe solid Brass construction
- WELS 4 Star, 7.0L/min
- Swivel spout
- Brushed Living Brass finish will develop a beautiful aged finish overtime
- Finish: Chrome Plated (CP), Brushed Living Brass (BLB)



Part No.	Finish	Sold Per
CBT1460	CP, BLB	ea



Brushed Living Brass finish
develops a beautiful aged finish overtime

OFFICINA
NICOLAZZI
DAL 1960

Nicolazzi Traditional Pull Out Spray Mixer

- Handmade & assembled in Italy
- Pull Out Spray Ideal for large farmhouse style sinks as spray reaches across sink also ideal for filling pots
- Lead-Safe solid Brass construction
- WELS 4 Star, 7.0L/min
- Swivel spout
- Living Brass finish means the tap will develop a beautiful aged finish overtime
- Finish: Chrome Plated (CP), Brushed Living Brass (BLB)



Part No.	Finish	Sold Per
CBT3420	CP, BLB	ea



www.dorsetaustralia.com.au



WHITEBIRK SINK COMPANY

• ENGLAND •

**Head Office &
Distribution Centre:**

143 Allingham Street,
Golden Square VIC 3555, Australia

Postal Address:

PO Box 2290, Bendigo VIC 3554

Phone: 1300 121 800 | **Fax:** 1300 121 850

Email: hello@dorsetaustralia.com.au

